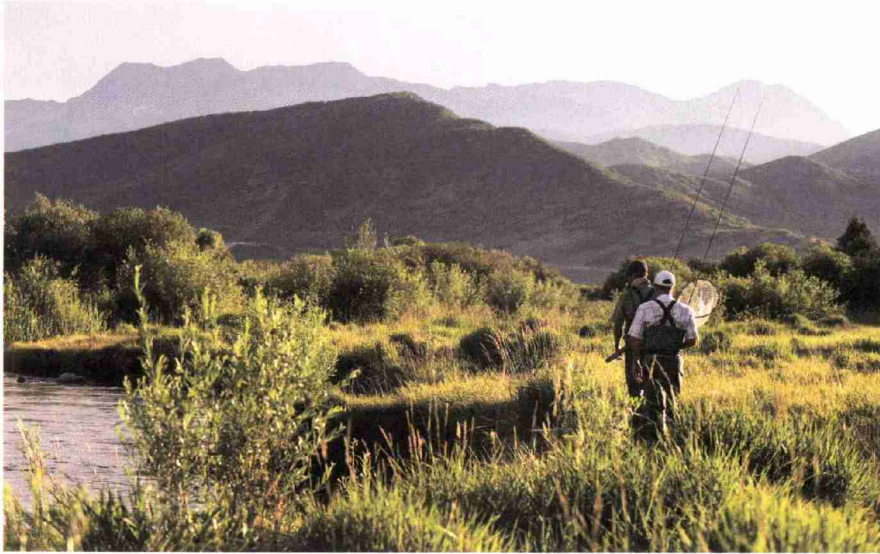


 DESTINATION GUIDE | **PARK CITY** | BY SARAH J.F. BRALEY



Why here? In the depths of winter, it's uplifting to remember all the wonderful activities Park City, Utah, has to offer in the summer: golf, fishing, mountain biking, hiking, horseback riding and more. Even so, the cool blue beauty of the winter season here is an attraction all its own.

SALT LAKE UPDATE

• After the Utah Legislature approved a bill to help finance a 1,000-room headquarters hotel to serve Salt Lake City's Salt Palace, **Omni Hotels** was selected as the potential developer. Omni and Salt Lake County are now undergoing a 90-day negotiation period, hammering out site selection and the final details. Officials expect the process to conclude by the end of February. The Salt Palace offers 515,000 square feet of exhibit space.

Local Update

• The 220-room **Montage Deer Valley** is now a member of Associated Luxury Hotels International. The property features 55,000 square feet of indoor and outdoor function space, ski-in/ski-out access to the slopes of Deer Valley, the 35,000-square-foot Spa Montage, a fitness center, and indoor and outdoor pools. Aside from skiing, winter guests can go ice skating, snowmobiling, bobsledding and more. In the spring, summer and fall, hiking, mountain biking, horseback riding, fly-fishing, kayaking and rafting are on the agenda. The Montage has four restaurants.

• Powdr, a privately owned and operated lifestyle and mountain sports company, has sold the **Park City Mountain Resort** base area, parking, lower ski terrain and lifts, as well as water and snowmaking for the entire

Continued on page 96



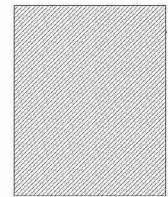
Airlift to ski lift: Park City's slopes are less than an hour's drive from Salt Lake City International Airport. Planners can arrange for attendees to land in the morning and head directly to the slopes for the afternoon.



SHOP HERE

Allow attendees time to peruse the wares on Park City's Historic Main Street (historicparkcityutah.com). Featured items include European housewares at La Niche Gourmet & Gifts, leather boots and jackets at Burns Cowboy Shop and hand-crafted jewelry from Park City Jewelers Silvermine.

 To find and compare hotels, send RFPs, visit mcvenues.com



LUSTIG/FILM FELD/ISTOCKPHOTO



> Park City Mountain Resort is now owned by Vail Resorts.

Continued from page 93

mountain to Vail Resorts. This past December, Vail announced it will build a new high-speed gondola over the summer to connect PCMR to the Canyons Resort, part of a \$50 million investment planned at the two properties heading into the 2015-16 ski season. Two other lifts also will be made bigger and faster, a new restaurant will be added and two restaurants will be renovated.

- The 100-suite **Hotel Park City** has become part of the Autograph Collection by Marriott. On-site are a Ruth's Chris Steak House and the Bandanas Bar & Grill, and the property has nine meeting rooms to accommodate groups of up to 500 people.

- In October, Deer Valley Resort agreed to buy the nearby **Solitude Mountain Resort** and will begin operating the property on May 1.

- The Yarrow Hotel has been gutted and will reopen in May as the **Double-Tree by Hilton – The Yarrow**. The 182-room property will offer 11,837 square feet of function space. Dining outlets

will include the Mountain Grill and the Skyline Pub.

- The **Park City Convention & Visitors Bureau** has revamped its website at parkcitymeetings.com. A new “map your meeting” feature helps start the planning process, and the online RFP function has been improved.

MEETING HOTELS:

Groups visiting Park City and nearby Deer Valley have much to choose from, including the 450-unit Westgate Park City Resort & Spa, 350-room Canyons Grand Summit Hotel, 266-room Lodges at Deer Valley, 220-room Montage Deer Valley, 199-room Park City Marriott, 185-room Newpark Resort, 181-room St. Regis Deer Valley, 180-room Stein Eriksen Lodge, 178-room Hyatt Escala Lodge and 175-room Waldorf Astoria Park City.

To find and compare more area hotels and meeting spaces, as well as send RFPs, go to mcvenues.com.

AIRPORT TRANSIT: Salt Lake City International Airport, about a 35-minute drive from downtown Park City. Transfer cost to Park City by shared van, \$62-\$88 roundtrip

TAXES: Room tax, 3%; sales tax, 7.45%; total tax on hotel rooms, 10.45%. At the St. Regis Deer Crest in Wasatch County, room tax is 11.6%.

GROUP VENUES: Whisk attendees outside of town to play in a private setting, no matter the season. Just a 20-minute ride from Park City, **North Forty Escapes'** 3,000-acre mountain ranch serves up chuck-wagon dinners, horseback riding, fishing and ATV rides during the warm weather, then switches to snowmobiling, sleigh and dogsled rides in the winter. The lodge seats up to 150 for meals or meetings.

(435) 640-3239; northfortyescapes.com

For dining pleasure, the city's Historic Main Street beckons with flavorful chef-driven cuisine. For hearty fare following a day on the slopes, **Purple Sage** serves up meatloaf, fried chicken, house-made potato chips and much more. purplesageparkcity.com



MUSCLE RELAXANT. The top Park City spa on Yelp and number 2 on TripAdvisor is the **Aura Spa & Boutique** (auraspaforthespirit.com). Give the sports massage to a VIP; save the honey and milk wrap for yourself.

GOLF: Among the many beautiful courses in the area available for tournament play are the Canyons Resort Golf Club (canyonsresortgolf.com), Crater Springs Golf Course (craterspringsgolf.com), Jeremy Ranch Golf and Country Club (thejeremy.com) and Park City Golf Club (bit.ly/1E78o3v).

CONTACT: Park City Convention & Visitors Bureau, (800) 453-1360; parkcitymeetings.com ■

ILLUSTRATIONS: (TOP-LEFT) FELIX SÖCKWELL; (RIGHT) ISTOCKPHOTO.COM/KRISTINA-S. PHOTOGRAPH: PARK CITY MOUNTAIN RESORT